



INDOFINE Chemical Company, Inc.

121 Stryker Lane, Bldg. 30, Suite 1 • Hillsborough, NJ 08844 • U.S.A.

Phone: (908) 359-6778 • FAX: (908) 359-1179

website: www.indofinechemical.com

e-mail: chemical@indofinechemical.com

CERTIFICATE OF ANALYSIS

Cat No.: 19-742

Product: 2',3'-DIMETHOXYACETOPHENONE

CAS Number: [38480-94-3]

Lot Number: 0405100

Molecular formula: C₁₀H₁₂O₃

Molecular Weight: 180.21

Appearance: Light yellow liquid

Boiling point: bp_{14mm} 143-144°C

Solubility: Soluble in Chloroform

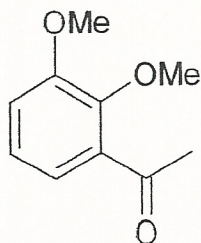
TLC: Chloroform:Ethyl acetate (9.5:0.5)

NMR Spectrum: Enclosed

IR Spectrum: Enclosed

Storage: Cool dry place

Purity(HPLC): 99+%





INDOFINE Chemical Company, Inc.

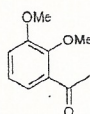
121 Stryker Lane, Bldg. 30, Suite 1 • Hillsborough, NJ 08844 • U.S.A.

Phone: (908) 359-6778 • FAX: (908) 359-1179

website: www.indofinechemical.com

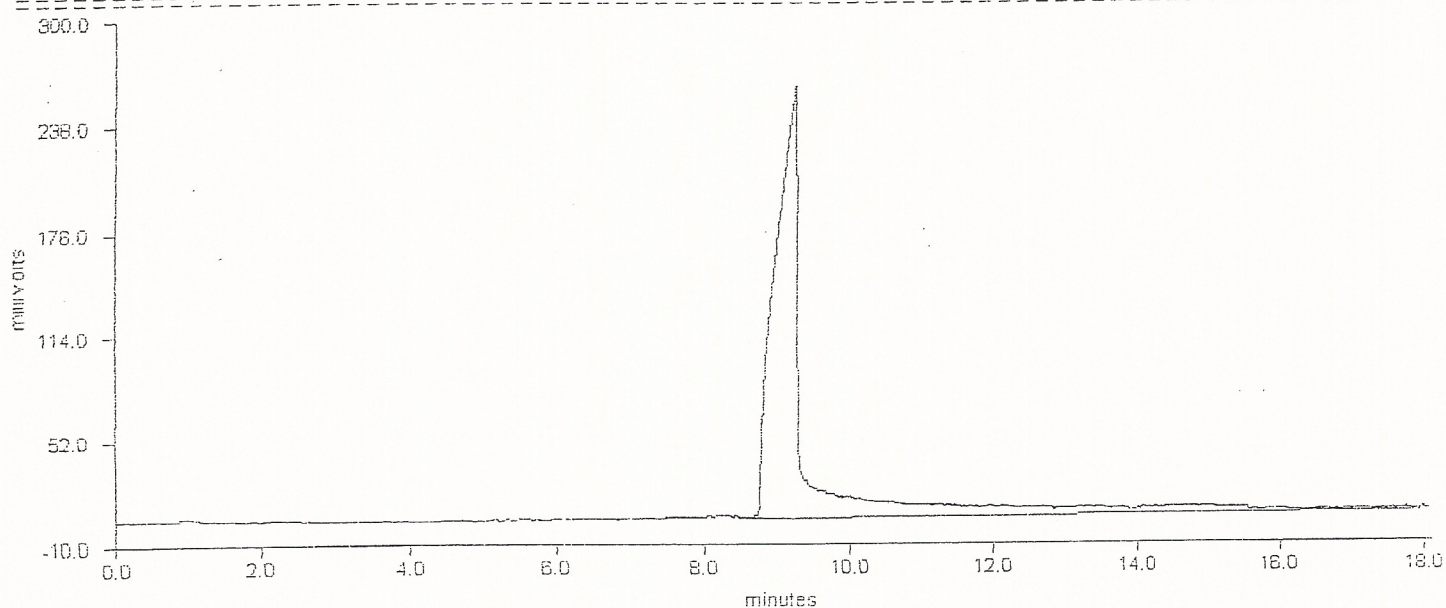
e-mail: chemical@indofinechemical.com

HPLC ANALYSIS



Catalog no.: 19-742
Product name: 2',3'-Dimethoxyacetophenone
Lot No.: 0405100

STRIPCHART PLOT FOR CHROMATOGRAM - c:\deltaw\data\np-025b.raw



DELTA CHROMATOGRAPHY DATA SYSTEM

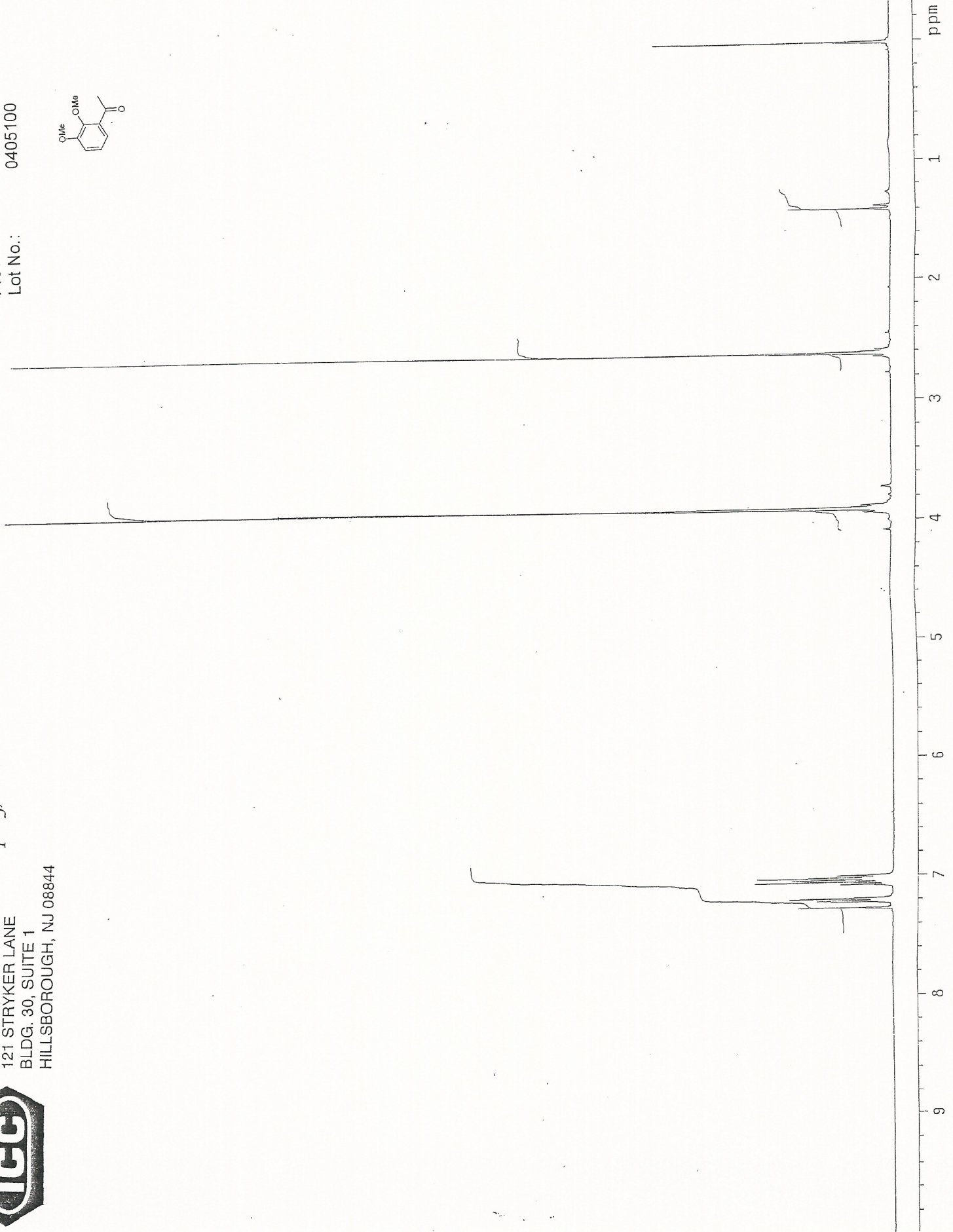
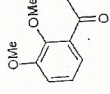
LISTING PEAK TABLE FOR CHROMATOGRAM - c:\deltaw\data\np-025b.raw.RAW

#	Type Name	Ret.Time	Area(uVSec)	Height(mV)	Area Percent
1	VT	3.02	4969	0.3	0.1
2	PB	9.23	7838939	254.7	99.4
3	PP	16.36	2633	0.2	0.0
4	VP	17.39	10983	1.5	0.1
5	PE	17.49	30176	1.5	0.4



INDOFINE Chemical Company, Inc.
121 STRYKER LANE
BLDG. 30, SUITE 1
HILLSBOROUGH, NJ 08844

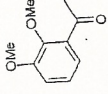
Catalog no.: 19-742
Product name: 2,3'-Dimethoxyacetophenone
Lot No.: 0405100



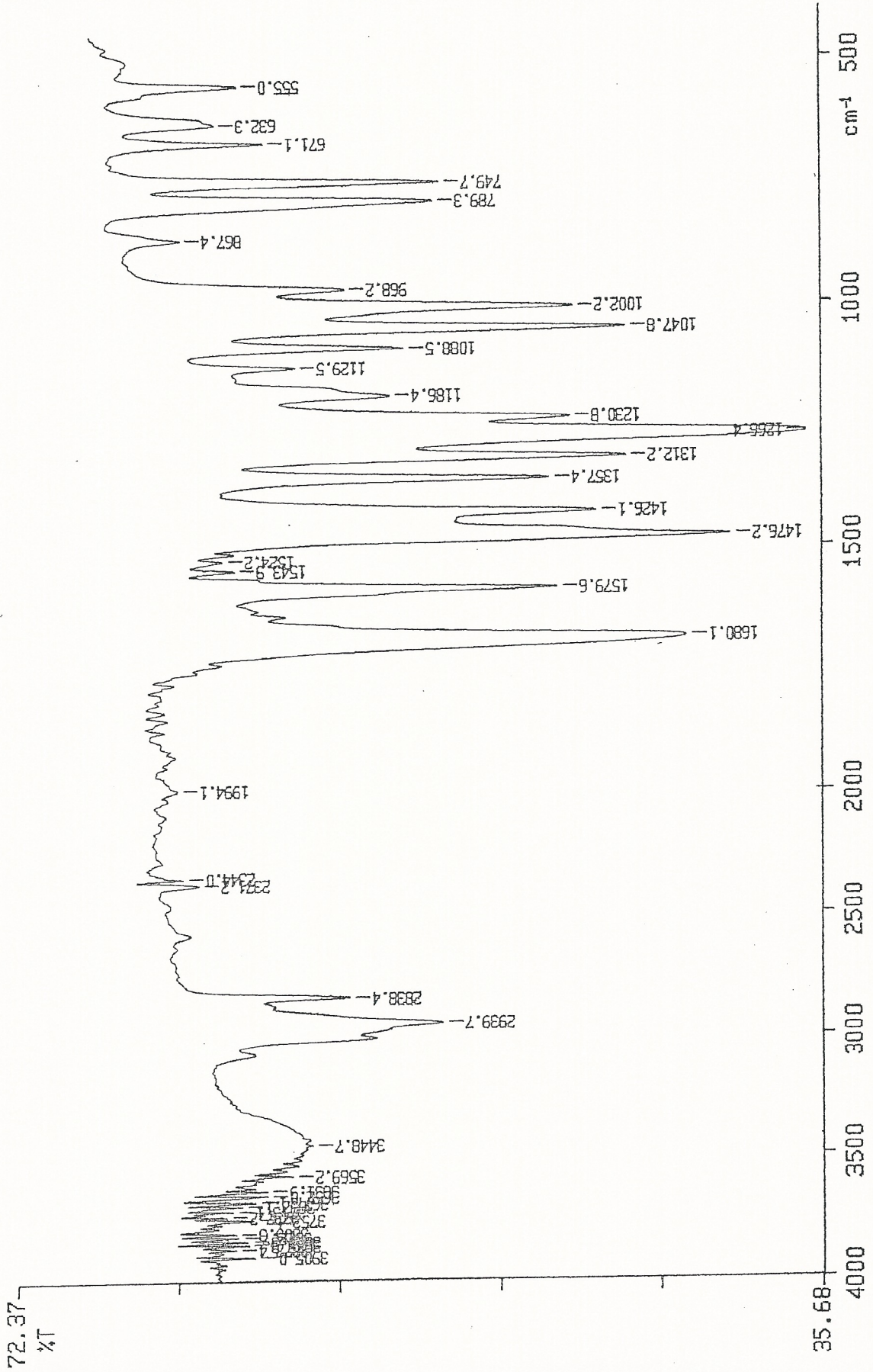


INDOFINE Chemical Company, Inc.
121 STRYKER LANE
BLDG. 30, SUITE 1
HILLSBOROUGH, NJ 08844

Catalog no.: 19-742
Product name: 2,3'-Dimethoxyacetophenone
Lot No.: 0405100



PERKIN ELMER



X: 1 scan, 8.0cm-1